

ESH

EVELYNE HOUSE OF SHAME

ON THE MOVE



LA ZOUZE
Cie CHRISTOPHE HALEB

EVELYNE HOUSE OF SHAME Is...

Evelyne House Of Shame, is a wandering artistic «salon», momentarily opening the doors of special spaces and offering poetic trips there. An interdisciplinary festive evening which activates the desire to become someone else, and invites the participants into a collective celebration.

Evelyne House Of Shame, is a turbulence zone between performances and masquerades, openings and limits, ball and living picture. An installation putting together energies, shifting fluxes and opening view-points. A playground and meeting space where proximity flirts with fantastic realism.

Evelyne House Of Shame, is a strange way of spending time, a frivolous and solemn manner of inhabiting architecture. It's bringing the public to live within and take part in the subtle space of social relations, to get involved in a sensitive experience, to perceive our modernity.

Evelyne House Of Shame, is a space of experimentation where epochs and styles, art and heritage, bodies and scenery, customs and costumes are put in connection...

What stories does it tell us ?

Something of the fall of an empire, an echo of its flamboyance and immorality. An art of living where the body exults, a place of civilization between Rome and Tahiti.

It's total Dance floor, it's going into politics at night since daytime politics is dead, it's burying the 19th century and its physical nightmare. It's the attack of the Black Forest, crac crac crac crac crac, oh dashing Jacques Offenbach !

In the end, what matters here is realizing what the collective body is capable of inventing in order to foil foretold history.

EVELYNE HOUSE OF SHAME The team

A joyful and iconoclastic team

At Evelyn's, between ten and fifteen artists in exile, choreographer, dancers, actors, singers, performers, visual artists, musician and fashion designer create a utopian in situ object, inspired by the space they inhabit.

The team consists of european artists, the core of LA ZOUZE, and will also include artists from the host countries.

Artistic conception and direction : Christophe Haleb

Original Music : Alexandre Maillard

With the dancers, performers, singers, actors : Séverine Bauvais, Christophe Haleb, Princess Hans (Ryan Kellett), Christophe Le Blay, Katia Medici, Maxime Mestre, Thomas Gonzalez.

But also some artists and amateurs selected the city invested during workshop of artistic practices.

Polyane et paper collection : Laurent Le Bourhis

Hair stylist : Paolo Ferreira

Lighting and sounding coordinator : Julien Soulatre

Sounding assistant : Mister Klee

Production manager/ Booking : Géraldine Humeau

Production assistant : Gwendoline Langlois

EVELYNE HOUSE OF SHAME Production and diffusion terms (adaptable)

Strengthened by its first experiences throughout different cities and various places in France, the *Evelyne House Of Shame* « salon » now pursues its journey abroad.

An artistic proposal in situ which must necessarily be reactivated, adapted to each new context and inhabited space.

For each of the selected cities and architectures, here is the suggested sequence of events for the putting into action of the project, on a global period from 1 to 3 weeks :

- Workshops open to the local arts community, independent artists, academics : a choreographic workshop and a workshop for the making of costumes, scenography and artistic design during 1 or 2 weeks.
- Rehearsals and technical set up during 5 days.
- Opening of the « salon » : 2 public performances of about 3 hours.



EVELYNE HOUSE OF SHAME The partners

Coproductions carried out in 2009 and 2010 :

The Festival of Marseille

Le Merlan - Scène Nationale in MARSEILLE

Le Forum - Scène Conventionnée of BLANC-MESNIL

Le Festival Jerk Off in PARIS

Les Mécènes du Sud in MARSEILLE / The Ricard Society

With the financial support of the Conseil général des Bouches-du-Rhône, Centre
Départemental de Création en Résidence.

Coproductions carried out in 2011 :

The Dance Festival in CANNES

Coproductions carried out in 2012 :

The Cultural and Cooperation Center for Central America

The french Alliances of San José, Panama City, Tegucigalpa, San Salvador,
Guatemala City and Managua

The International Festival of Arts in SAN JOSE in Costa Rica

The Art Festival in Panama

The Frenc Institut, The SPEDIDAM, ADAMI and the PACA region

Considered coproductions for 2013 and 2014 :

The Schaerbeeck Halles in BRUXELLES

La Biennale de la Danse of LYON

Le Théâtre Pôle Sud in STRASBOURG

The Conexion Danza Plateform in Santiago de Chile

The Santiagoamil Festival

The french embassy of LA HAVANE

The Cervantino Festival in MEXICO

The FTA ; TransAmériques Festival in MONTREAL

LA ZOUZE - Cie Christophe Haleb is subsidized by the Ministère de la Culture et de la
Communication - Drac Provence-Alpes-Côte-d'Azur in accordance to the financial aid
program to dance companies.

It is also supported by the city of Marseille, the Conseil général des Bouches-du-
Rhône, the Seine-St-Denis department, and the Provence Alpes Côte d'Azur region.

EVELYNE HOUSE OF SHAME The spaces

Inhabited spaces in 2009 :

The palais de la Bourse in MARSEILLE

The palais Longchamp in MARSEILLE

Inhabited spaces in 2010 :

The Machine du Moulin Rouge in PARIS

The main theater of BLANC-MESNIL

Inhabited spaces in 2011 :

The Salle des Ambassadeurs of the Palais des Festivals in CANNES

Inhabited spaces in 2012 :

The Ancient Custom in SAN JOSE in Costa Rica

The National Theater of CIUDAD PANAMA in Panama

The National Theater of TEGUCIGALPA in Honduras

The Municipal Palais of SAN SALVADOR in Salvador

The Abril Theater of CIUDAD GUATEMALA in Guatemala

The building of the French Alliance and public parking of
MANAGUA in Nicaragua

Considered spaces in 2013 and 2014 :

The Schaerbeek Halles in BRUXELLES

Le Palais du Rhin in STRASBOURG

Location to be determined in LYON

The Bellas Artes Museum in SANTIAGO de CHILE

Location to be determined in LA HAVANE

Location to be determined in MEXICO

The Arsenal in MONTREAL



EVELYNE HOUSE OF SHAME Traces 2009-2012

Palais de la Bourse in Marseille, February 13th and 14th 2009, in partnership with the MerlanTheatre.



EVELYNE HOUSE OF SHAME Traces 2009-2012

Musée des Beaux-Arts of Palais Longchamp in Marseille, June 23th et 24th 2009, in partnership with the Festival of Marseille.



EVELYNE HOUSE OF SHAME Traces 2009-2012

Machine du Moulin Rouge in Paris, June 23th and 24th juin 2010, in the partnership with the Festival Jerk off.



EVELYNE HOUSE OF SHAME Traces 2009-2012

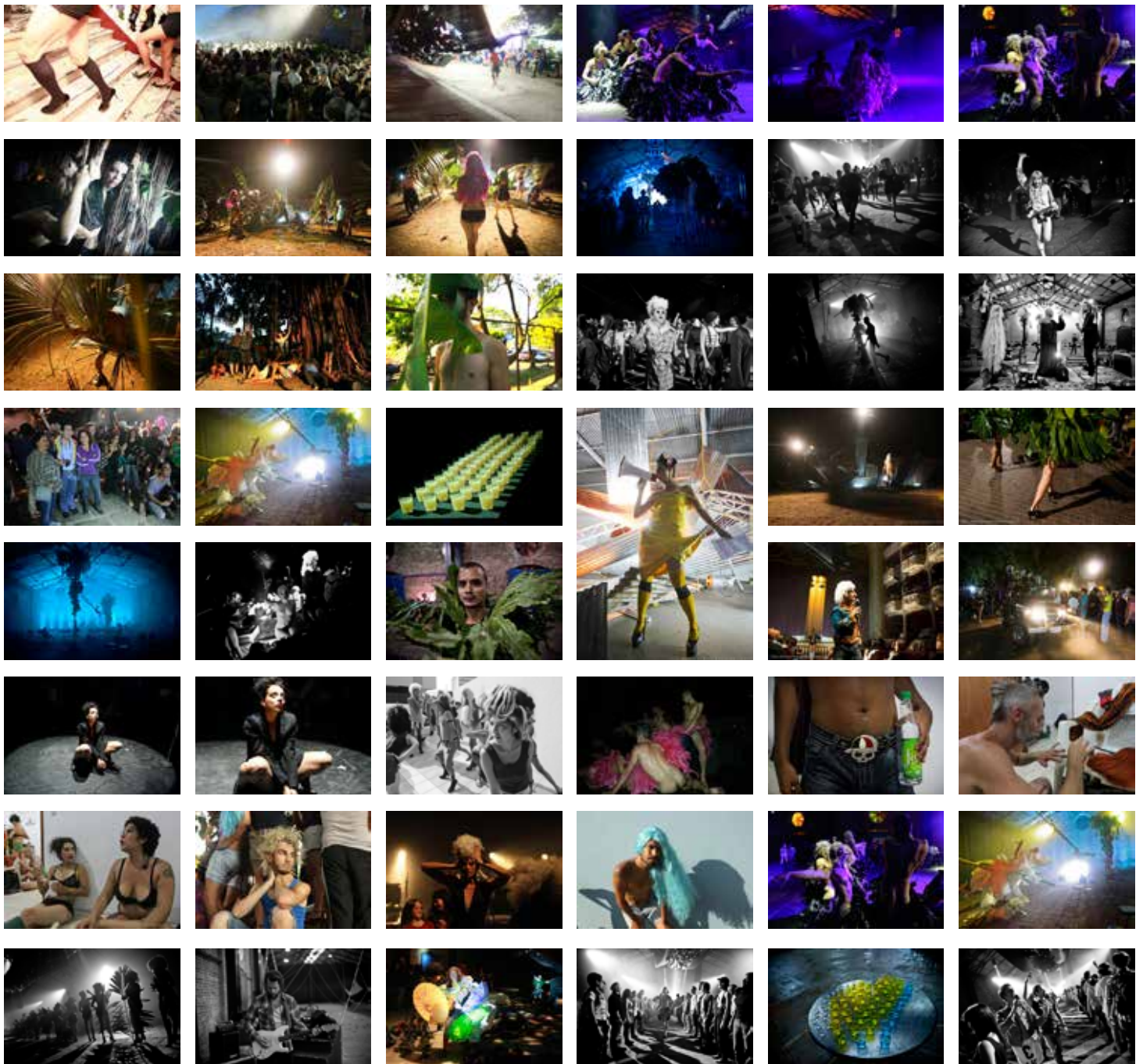
Forum Culturel of Blanc-Mesnil, October 1st et 2nd 2010, on the occasion of the Festival Temps Danse d'Automne.



EVELYNE HOUSE OF SHAME Traces 2009-2012

Salon des Ambassadeurs November, 26th 2011, on the occasion of the Dance Festival of Cannes.





EVELYNE HOUSE OF SHAME Traces 2009-2012

The Ancient Custom SAN JOSE in Costa Rica,

The National Theater of CIUDAD PANAMA in Panama,

The National Theater of TEGUCIGALPA in Honduras,

The Municipal Palais of SAN SALVADOR in Salvador,

The Abril Theater of CIUDAD GUATEMALA in Guatemala,

The building of the French Alliance and public parking of MANAGUA in Nicaragua.

EVELYNE HOUSE OF SHAME Contacts

LA ZOUZE-CIE CHRISTOPHE HALEB

Géraldine HUMEAU production manager / booking

+33 (0)6 86 91 56 42 / geraldine@lazouze.com / info@lazouze.com

Christophe HALEB - Choreographer and artistic director

+33 (0)6 84 30 76 21 / christophe.haleb@wanadoo.fr

Julien SOULATRE - Lighting and sounding coordinator

+33 (0)6 81 98 04 83 / jsoulatre@gmail.fr

LA ZOUZE - CIE CHRISTOPHE HALEB

37 bd Chave 13005 MARSEILLE

WWW.LAZOUZE.COM

